

# RISE AND SHINE



Based in a small town in the South, *Rise and Shine* depicts the relationship between Terri, a teen with a developmental disability, and her protective mother, Janice.

The tension arises between them when for the first time, Terri attends high school her senior year, determined to graduate and experience a “normal” teen life. Janice struggles to balance Terri’s growing need for independence while rediscovering her own needs when she falls in love with a local man.

*Rise and Shine* is about the strong bond between mother and daughter and the difficulties of letting go. It captures what it’s like to be a person with a disability as well as to be a caretaker.

In *Rise and Shine*, Terri meets and falls for Ryan, a handsome classmate who is dating popular Stephanie. While Ryan and Stephanie first reject Terri out of fear, they ultimately grow to care about her, finding themselves having grown because of their relationship with her.

This coming-of-age story explores themes of relationships, the value of empathy, and all people's paths to becoming independent.



# DIRECTOR STATEMENT:

Once upon a time there was a Princess.

She was beautiful, courageous, and full of joy. But she had a special challenge. While her physical body was 19 years old, she still saw the world through a young child's eyes. Her doctors said she would never change.

While she may have seen the world differently from all the people around her, she did not consider herself different at all.

But this difference kept her devoted mother afraid of how the world would react to the Princess. So her mother sacrificed her own life to keep her beautiful daughter safe in their castle.

But still, even with all her mother's love and devotion, the Princess wanted to see the world outside of her castle.

So her mother swallowed all her fears, opened the castle door....and let her go to high school.

Everyone has inherent dignity and unique self-worth.

Everyone deserves full inclusion in our communities and society.

Everyone deserves an opportunity to live with as much self-determination and independence as possible.

# STONE TERRI'S WORLD



**Rise and Shine** is Enchanted meets Welcome to the Dollhouse





**how the world sees her**

**how she sees herself**

**there's a dichotomy  
between Terri's world  
and the rest of the world**









in terri's world,  
there's always  
a little bit  
of magic











**WORLD**





**Terri's Home**







**The film will also highlight Southern culture to add a richness to the people and places in the story**





**Terri's church**











**Janice, Terri's mother, shows audiences the highs and lows of the responsibility of caretaking**





**Doc and Janice: themes of  
patience and kindness**







Terri's High School



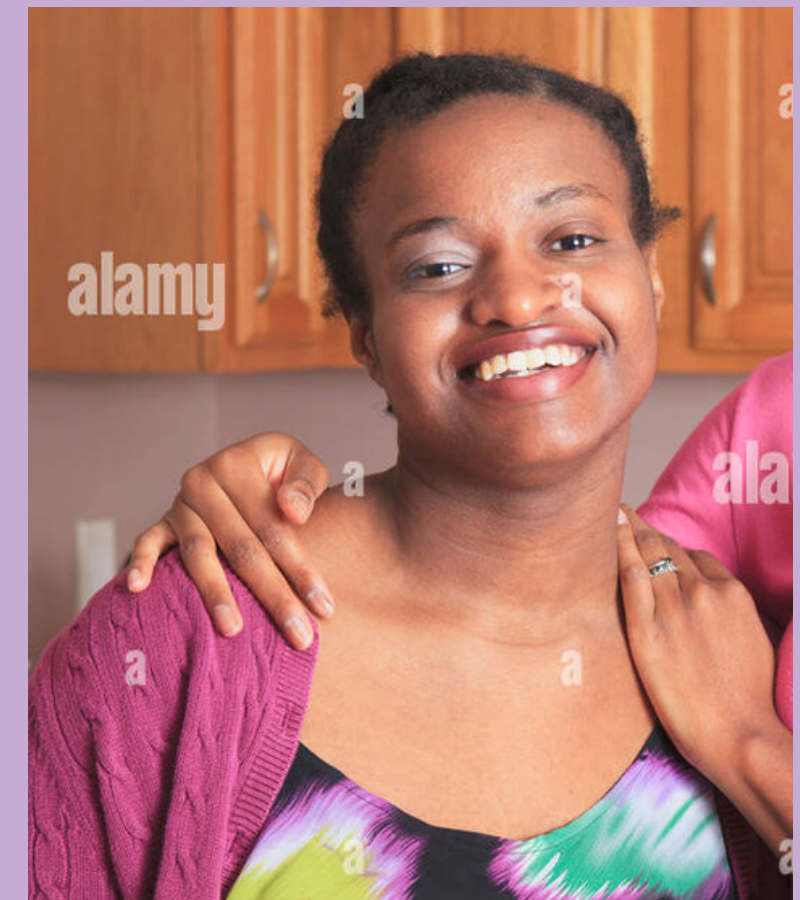
**Terri's non-disabled classmates she meets at high school, who, by knowing her, are given the opportunity to learn to understand, accept, and be a better friend to someone with cerebral palsy.**







Terri's classmates





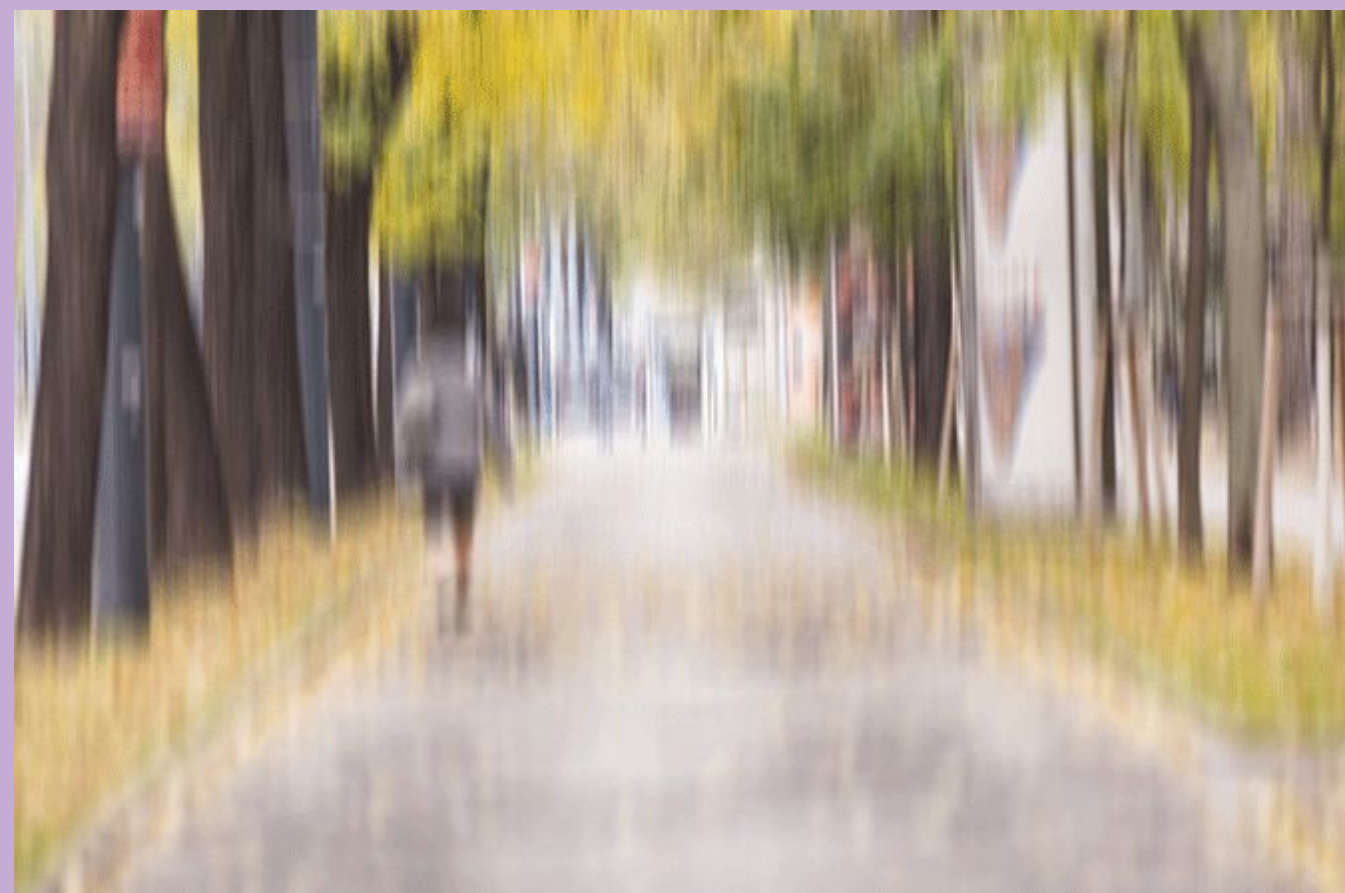


# CINEMATOGRAPHY



# BLUR

Terri's POV when she has big emotions





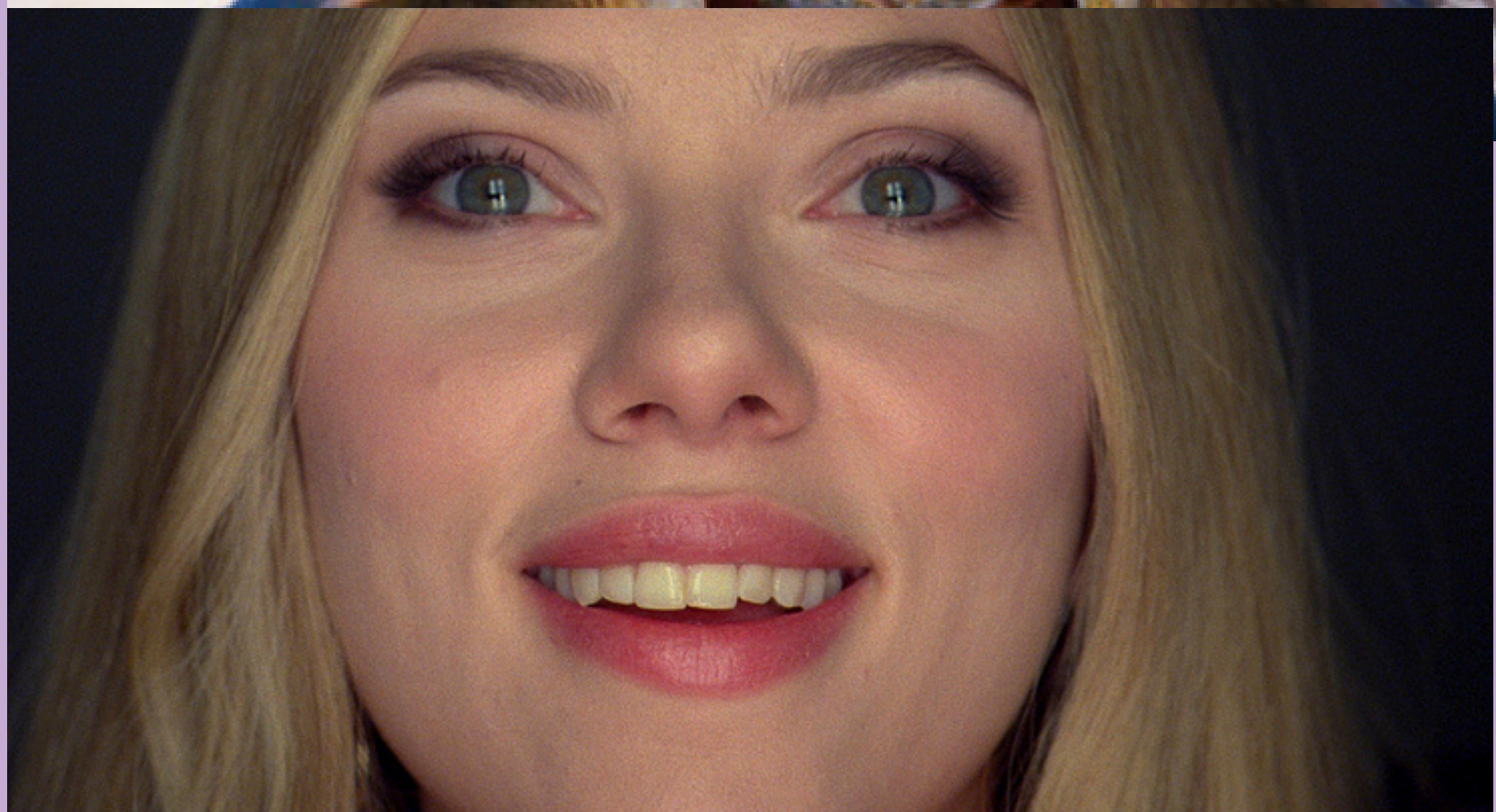
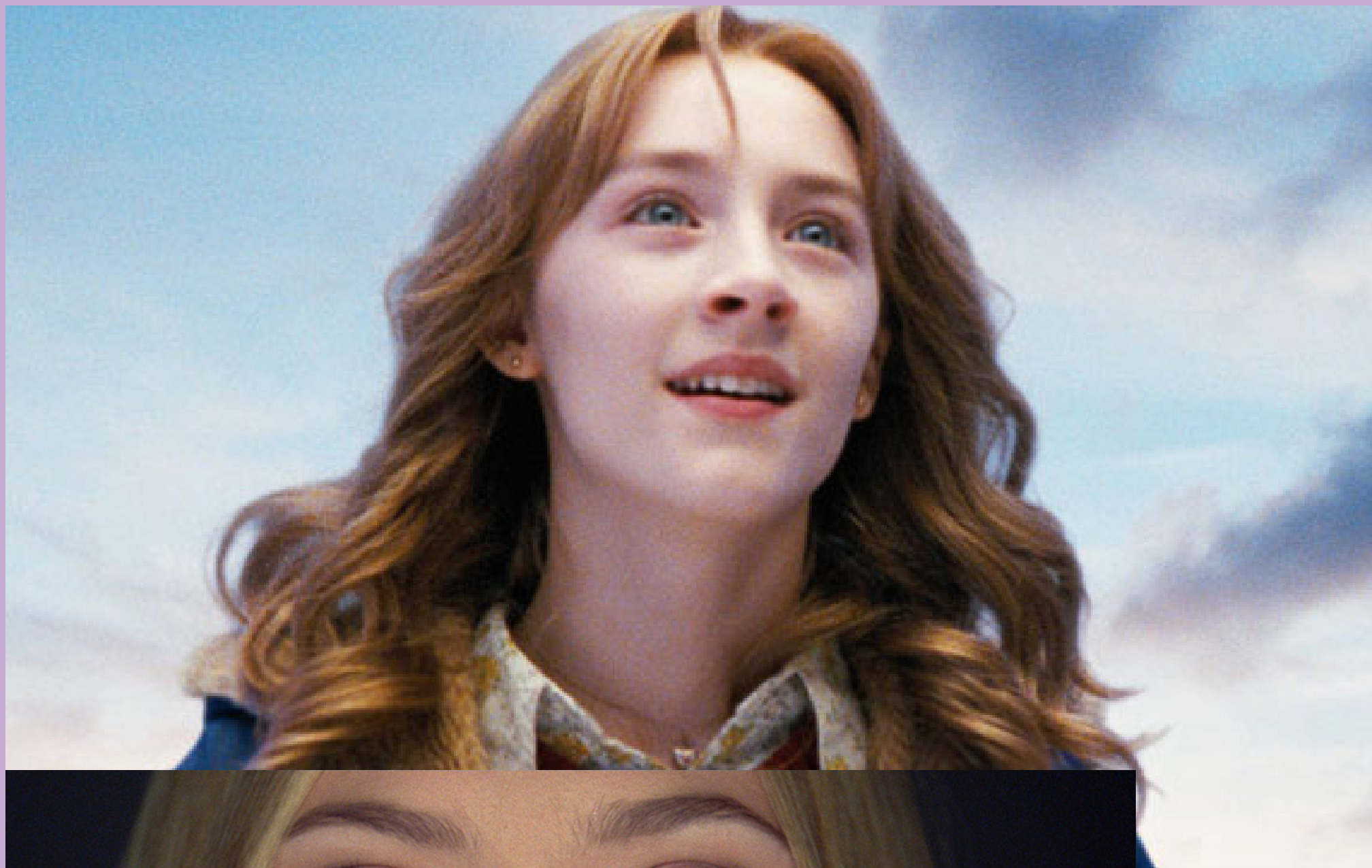
# POV

New people might  
be a little intense





# ECU & HERO SHOTS





# MAGICAL REALISM







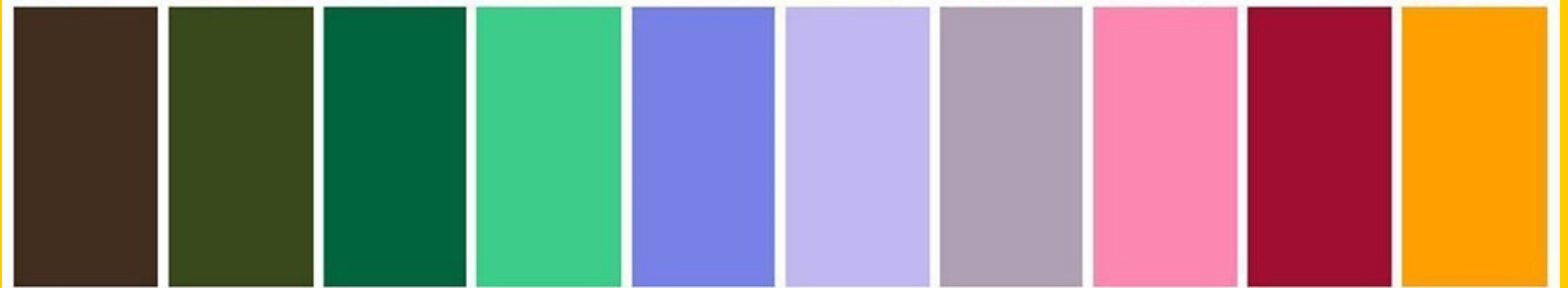
**PINK**





# COLOR PALLETTE

Using different tones  
between real world  
and Terri's POV





# RISE AND SHINE

